

Blinded me with science	Lucky Numbers	Video killed the radio star	Show me the money	ID10T Error	Potpourri
<u>100</u>	<u>100</u>	<u>100</u>	<u>100</u>	<u>100</u>	<u>100</u>
<u>200</u>	<u>200</u>	<u>200</u>	<u>200</u>	<u>200</u>	<u>200</u>
<u>300</u>	<u>300</u>	<u>300</u>	<u>300</u>	<u>300</u>	<u>300</u>
<u>400</u>	<u>400</u>	<u>400</u>	<u>400</u>	<u>400</u>	<u>400</u>



Electrons are smaller than atoms .

A. True

B. False



Dewey Double

All radioactivity is man-made .

- A. True
- B. False



Antibiotics kill viruses as well as bacteria .

A. True

B. False



A doctor tells a couple that their genetic makeup means that they've got one in four chances of having a child with an inherited illness. Does this mean that if their first child has the illness, the next three will not?

A. Yes

B. No



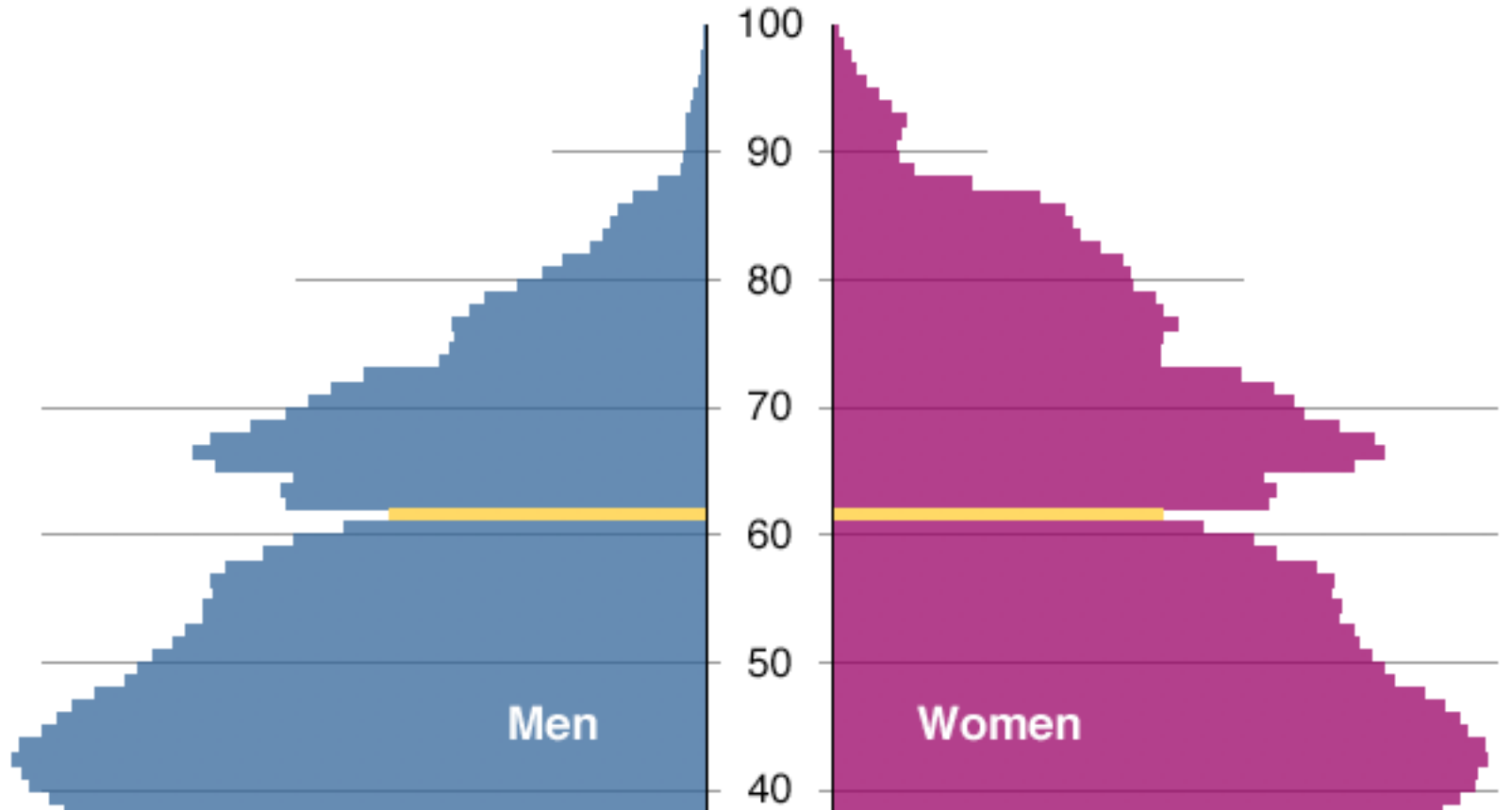
The number in the top portion
of a fraction is the:

- A. Numerator
- B. Denominator
- C. Dividend
- D. Quotient



Age Structure: 2006*

Germany



- A. True
- B. False



College Students

MAJOR	Male	Female	TOTAL
Business	30%	10%	40%
Economics	5%	25%	30%
MIS	15%	15%	30%
TOTAL	50%	50%	100%

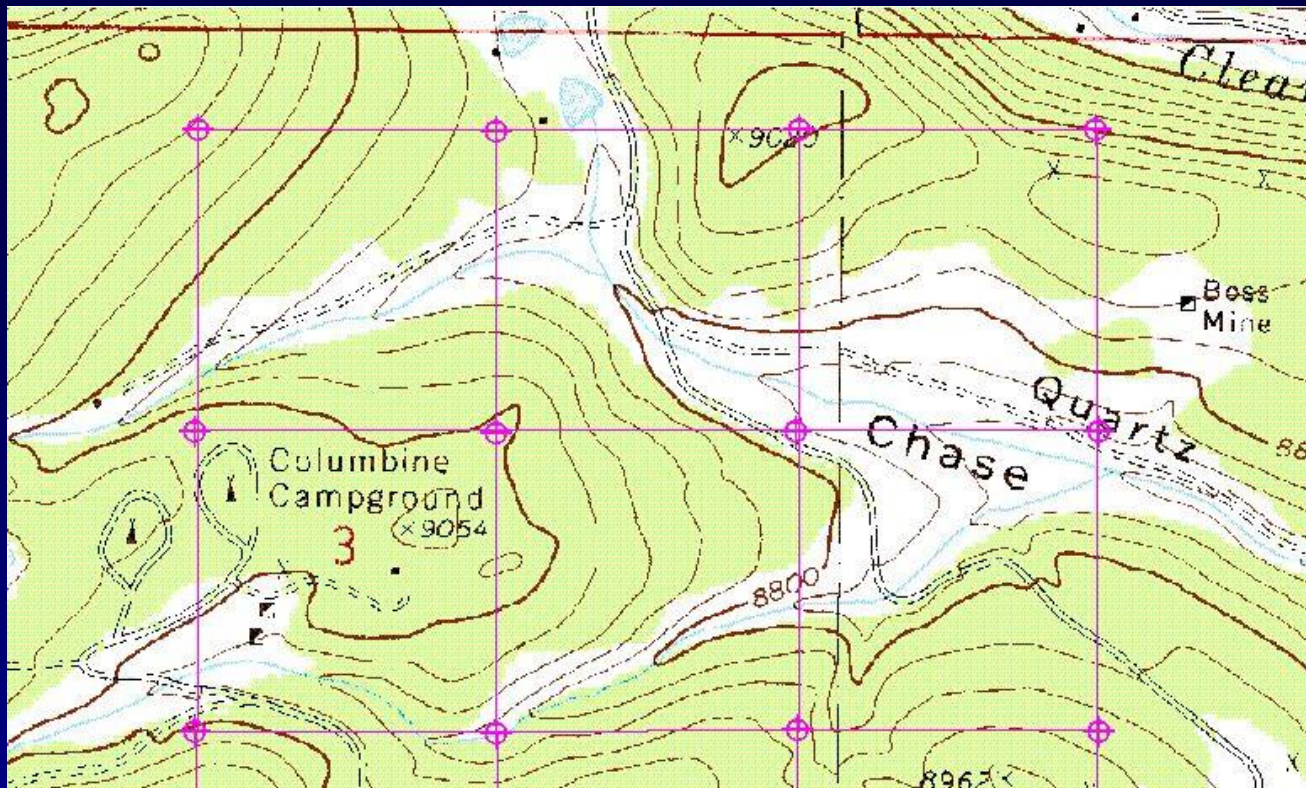
- A. 30% of male college students are business majors
- B. 30% of college business majors are males
- C. 30% of college students are male business majors
- D. 30% of male business majors are college students



If a sample refers to the individuals or organizations selected to represent the population, there is no sampling error in a census.

- A. True
- B. False





- A. Roads
- B. Rivers
- C. Elevation
- D. Bike Trails

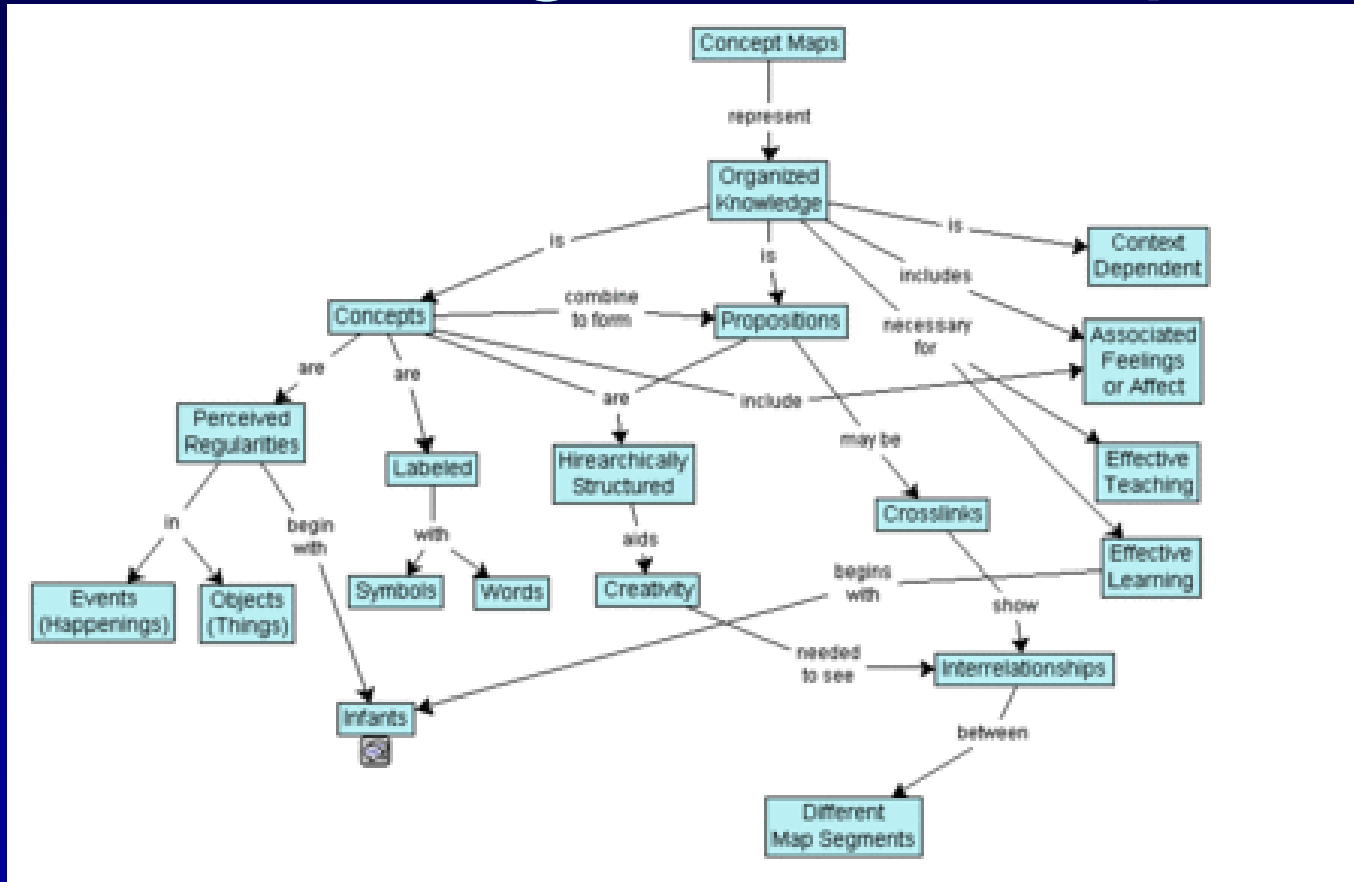


If three maps were on the same size sheet of paper, which would show the least amount of detail?

- A. 1: 4,000
- B. 1: 40,000
- C. 1: 400,000
- D. 1: 4,000,000



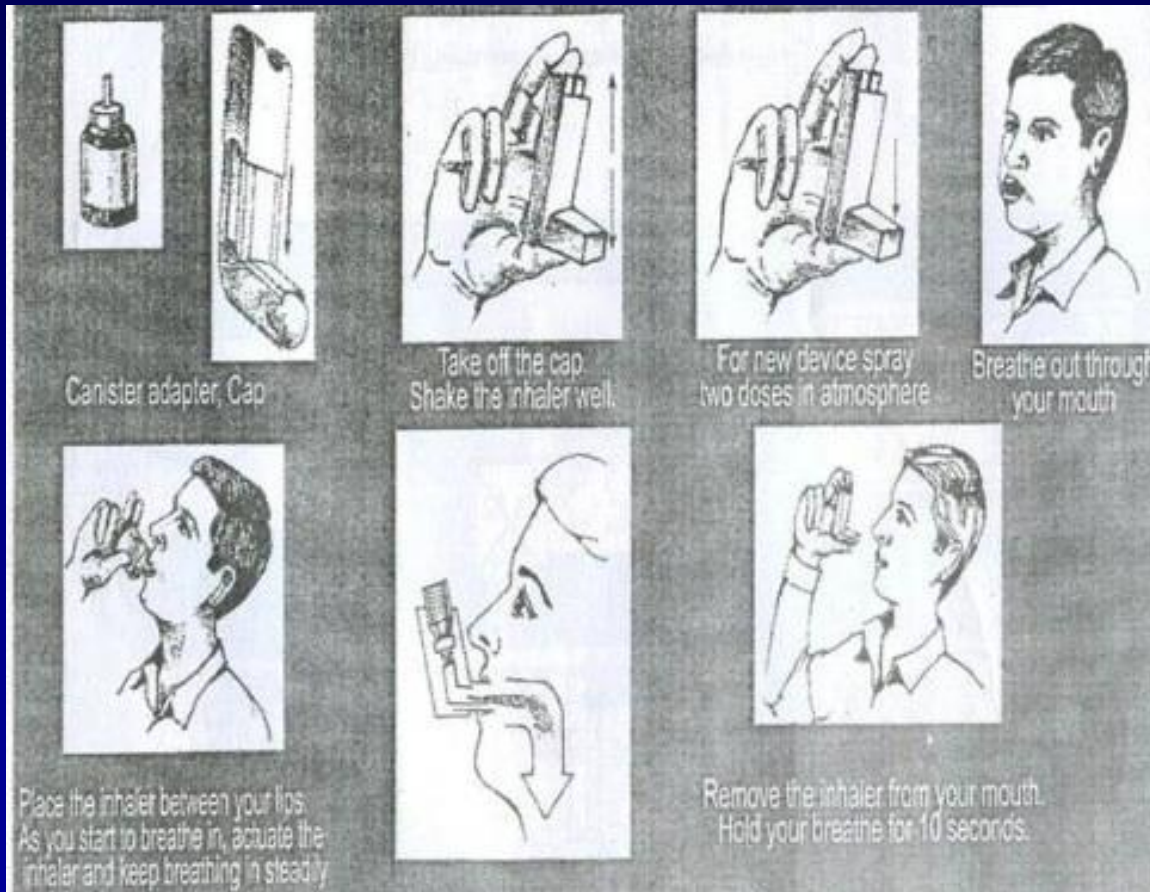
The following is a concept map.



- A. True
- B. False



The following is a/an:



- A. Pictogram
- B. Ideogram
- C. Concept Map



Which one of the following statements about the function of money is incorrect?

- A. Money makes it easier to save.
- B. Money makes trading goods and services easier.
- C. Money holds its value well in times of inflation.



When the federal government's expenditures for a year are greater than its revenue for that year, the difference is known as:

- A. The national debt.
- B. A budget deficit
- C. A budget surplus.



Which of the following are most likely to be helped by inflation?

- A. People living on a fixed income.
- B. Banks that loaned money at a fixed rate of interest.
- C. People who borrowed money at a fixed rate of interest.
- D. None of the above.



Gross national product includes the income of those residents earned by corporations owned overseas and from working abroad.

- A. True
- B. False



When emailing, what does BCC stand for?

- A. Bi-carbon copy
- B. Blind carbon copy
- C. Basic Character Coding
- D. British Columbia Columbia



The most popular open source license, used by the Linux kernel.

A. GPL

B. BSD

C. MPL

D. Microsoft Shared Source License

E. APL



Yahoo's image site that lets you publish under and search by Creative Commons licenses

- A. Flickr
- B. Shutterfly
- C. Picasa
- D. Wikimedia Commons
- E. Photobucket



Which screen resolution produces the largest text and icons?

A. 640x480

B. 800x600

C. 1024x768



Who did Shawn not vote for in
the last US election?

A. Dubya

B. Kerry



Dewey Double

How old is the average video game player?

- A. 13
- B. 23
- C. 33
- D. 43



What percentage of gamers are female?

- A. 25%
- B. 33%
- C. 35%
- D. 40%



Who's going to win the Stanley Cup?

- A. The Detroit Red Wings
- B. The Dallas Stars
- C. The Philadelphia Flyers
- D. The Pittsburgh Penguins

